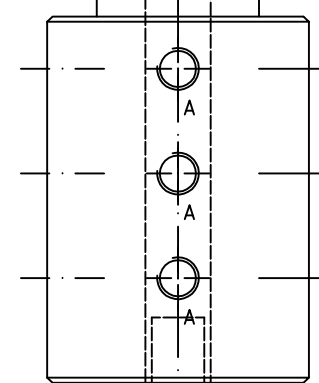
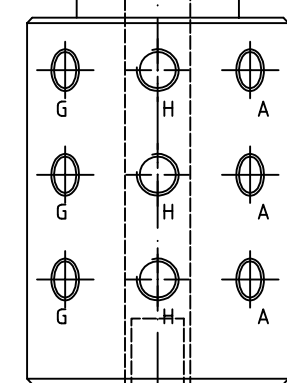
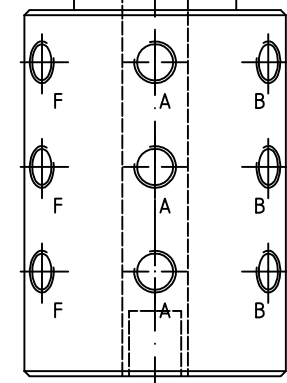
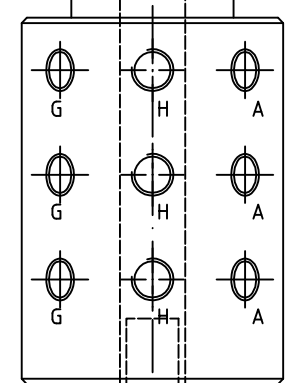
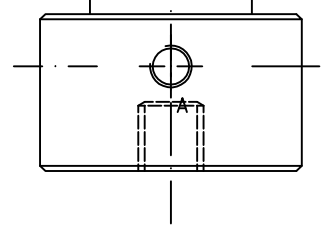
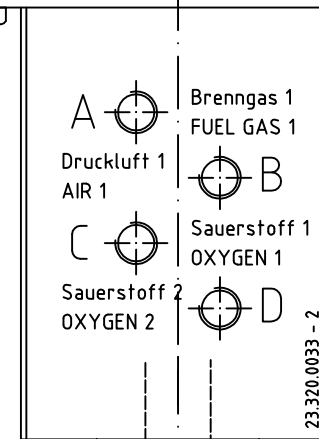
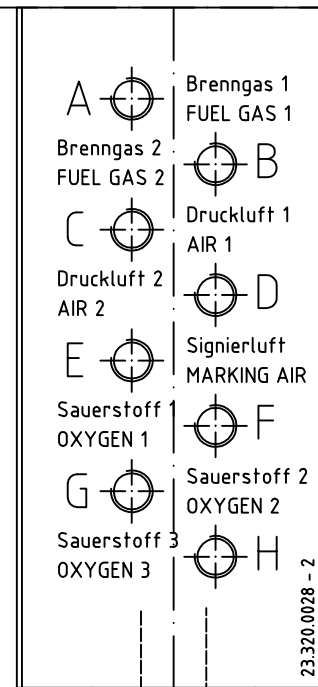
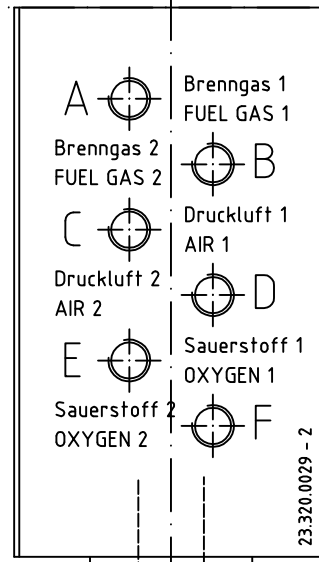
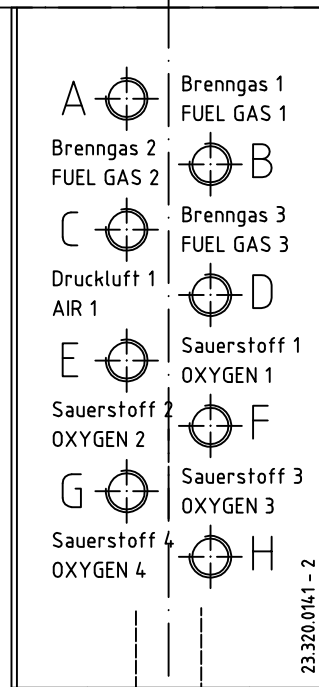
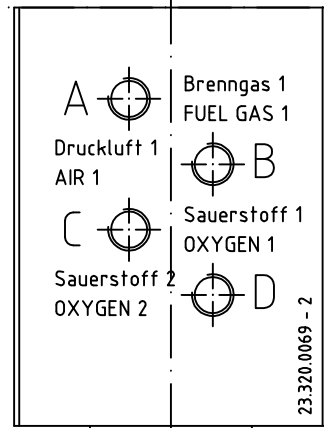
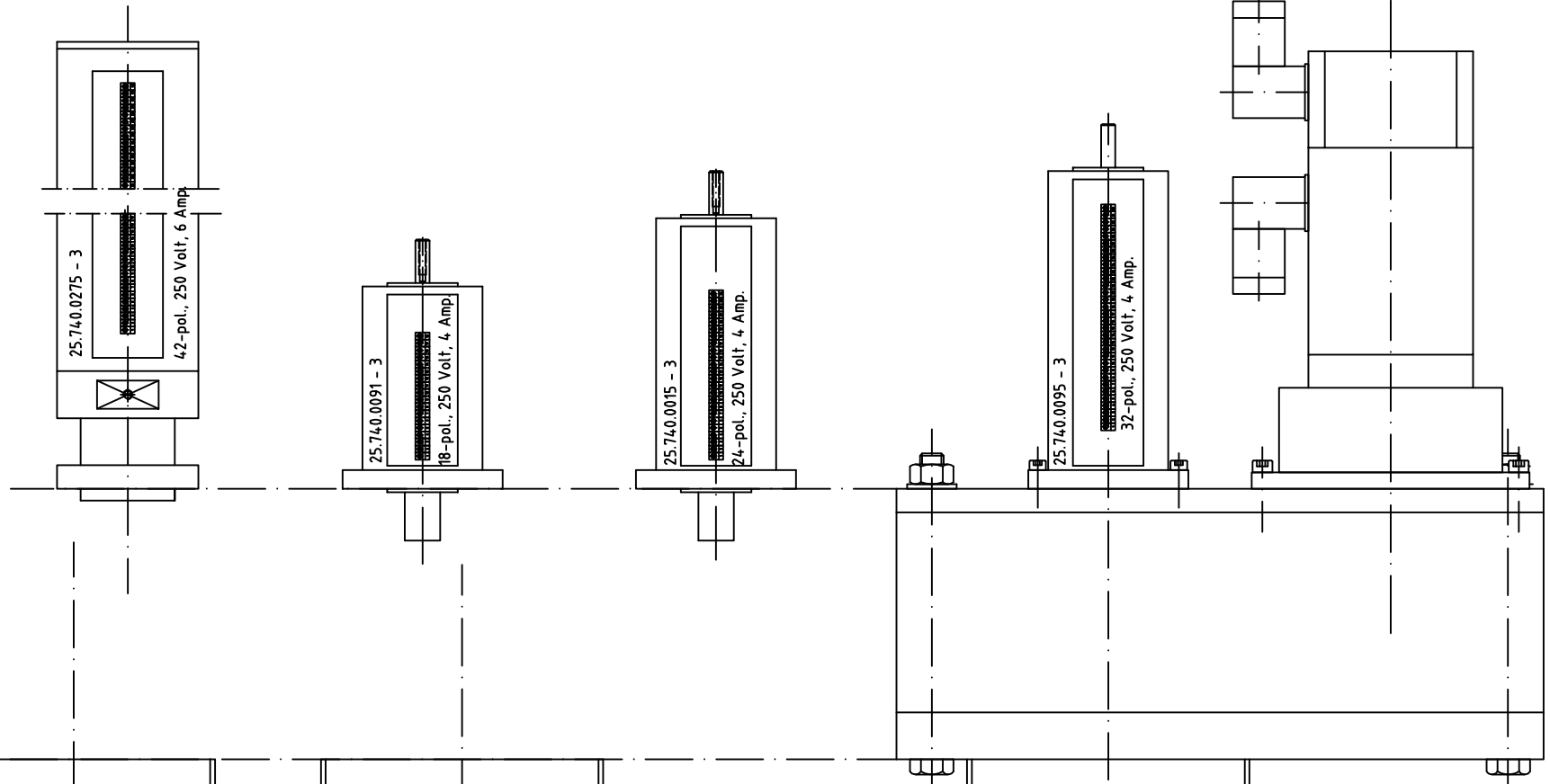


Nur zur Information  
FOR INFORMATION ONLY



Änderungen vorbehalten / Alterations are reserved

Pos.	Menge	Einheit	Benennung	Sachnummer / Norm-Kurzbezeichnung	Bemerkung
Frei	0,5-	6mm	+/- 0,1	CAD	Oberfläche Maßstab 1:2 Position - Menge -
nach	6 -	30mm	+/- 0,2		
DIN 7168 Teil1	30 -	120mm	+/- 0,3		
Genauigkeitsgrad	120 -	400mm	+/- 0,5		
m (mittel)	400 -	1000mm	+/- 0,8	DIN ISO 1302	-mit 20.005.0019 - 2
				DIN 3141 Reihe 2	-
			Datum	Name	Aggregat - Übersicht 2016 ROTATING UNITS / OVERVIEW
			Bearb. 06.2016	sp.	
			Gepr.		
			Norm		Lothar Spahn Konstruktion und Maschinenbau 20.005.0019-2-16
Zust.	Änderung	Datum	Name	EDV Nr. 20.005.0019-2-16	
					Blatt
					Bl